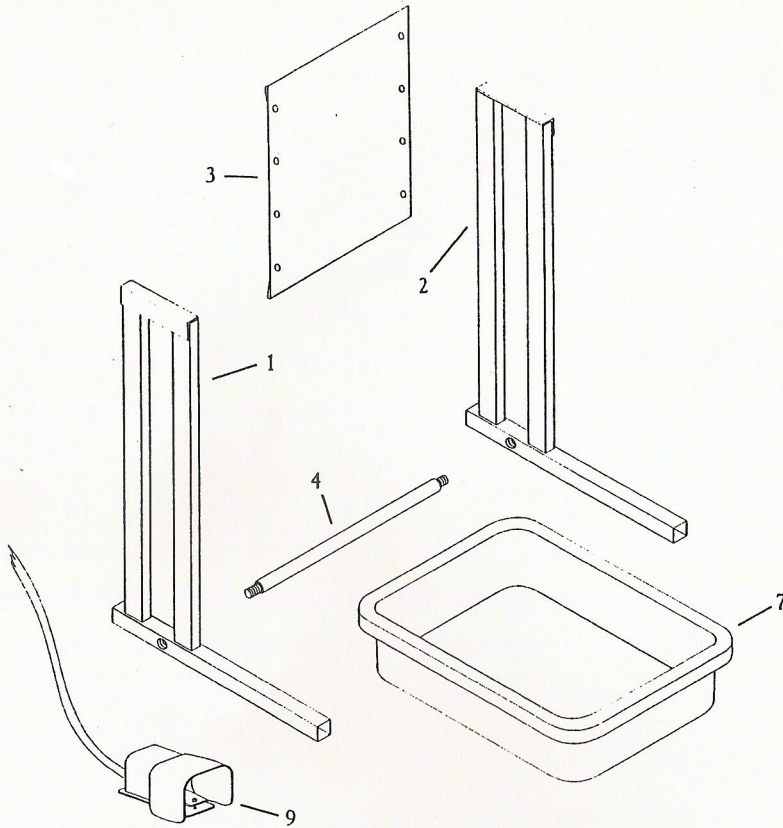
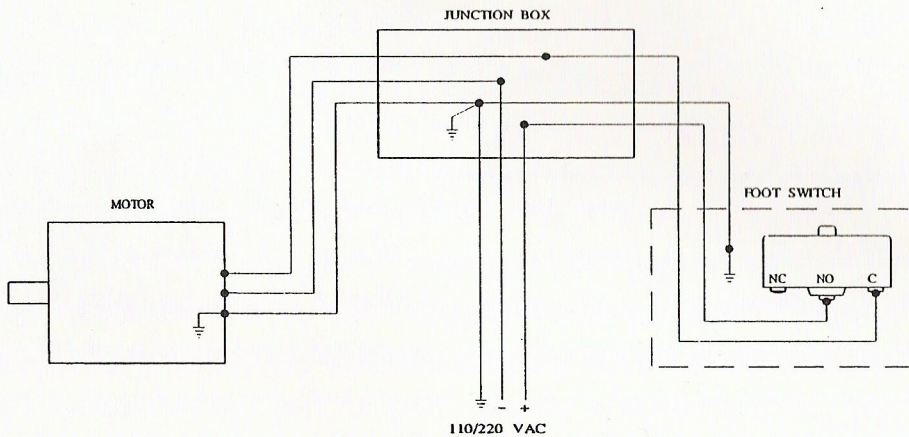
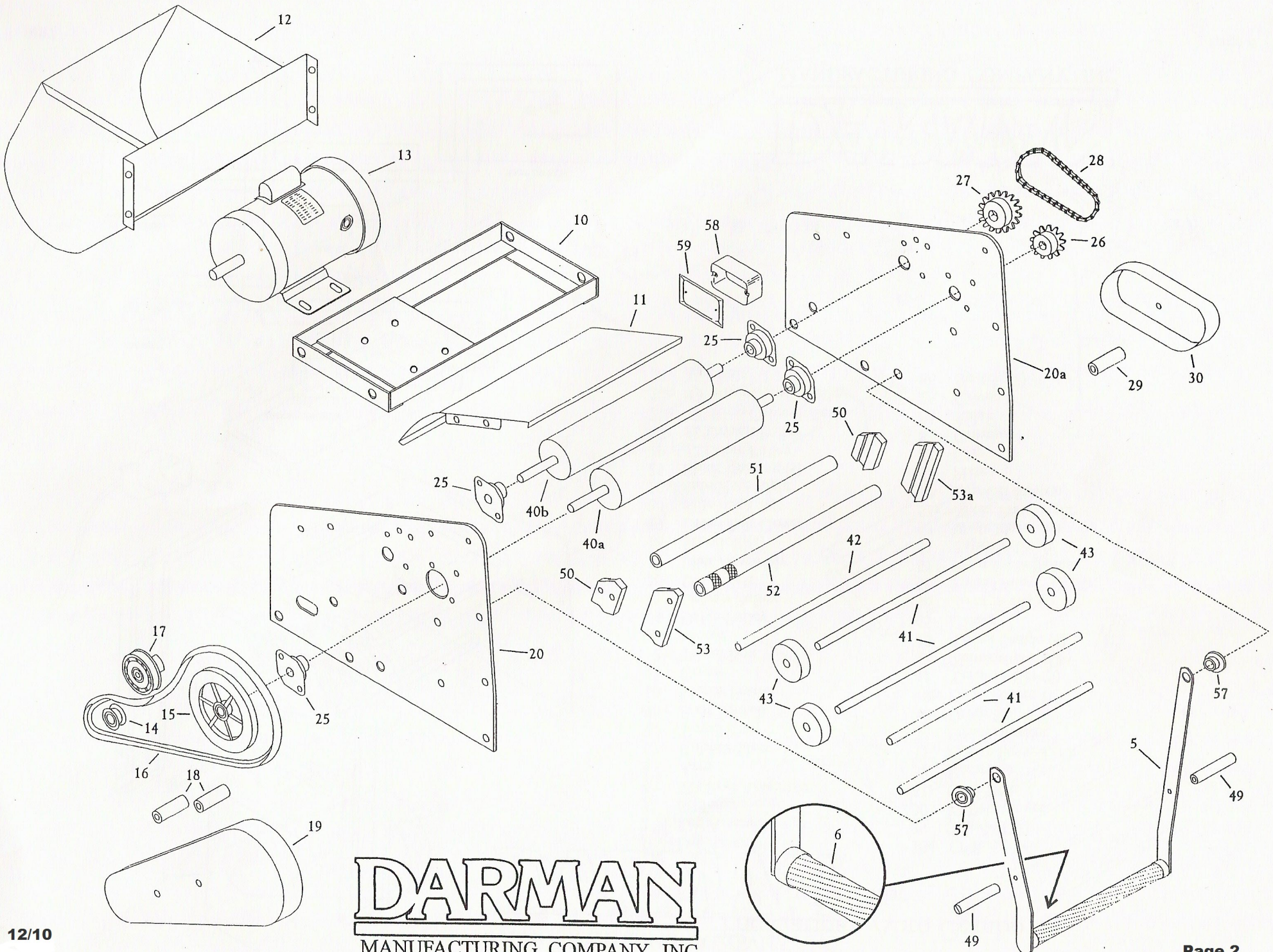


## The Darman Basic Combo Parts List



- |     |                           |     |                         |
|-----|---------------------------|-----|-------------------------|
| 1   | Leg Assembly <i>left</i>  | 25  | Shaft Bearing (4)       |
| 2   | Leg Assembly <i>right</i> | 26  | #2 Drive Sprocket       |
| 3   | Stiffener                 | 27  | #2 Driven Sprocket      |
| 4   | Tie Rod Assembly          | 28  | Drive Chain             |
| 5   | Swing Arm                 | 29  | Standoff                |
| 6   | Cork Sleeve               | 30  | Chain Cover             |
| 7   | Towel Tray                | 40a | Drive Roller A          |
| 9   | Foot Switch               | 40b | Drive Roller B          |
| 10  | Motor Frame               | 41  | Tension Bar (4)         |
| 11  | Cover                     | 42  | Tension Bar (1)         |
| 12  | Towel Box                 | 43  | Towel Guide (4)         |
| 13  | Motor                     | 49  | Handle (2)              |
| 14  | Drive Pulley              | 50  | Wear Block Rear (2)     |
| 15  | Driven Pulley             | 51  | Straight Shaft          |
| 16  | Drive Belt                | 52  | Tapered Shaft           |
| 17  | Idler Assembly            | 53  | Wear Block <i>left</i>  |
| 18  | Standoff (2)              | 53a | Wear Block <i>right</i> |
| 19  | Drive Belt Cover          | 57  | Bushing (2)             |
| 20  | Side Plate <i>left</i>    | 58  | Junction Box            |
| 20a | Side Plate <i>right</i>   | 59  | Junction Box Cover      |

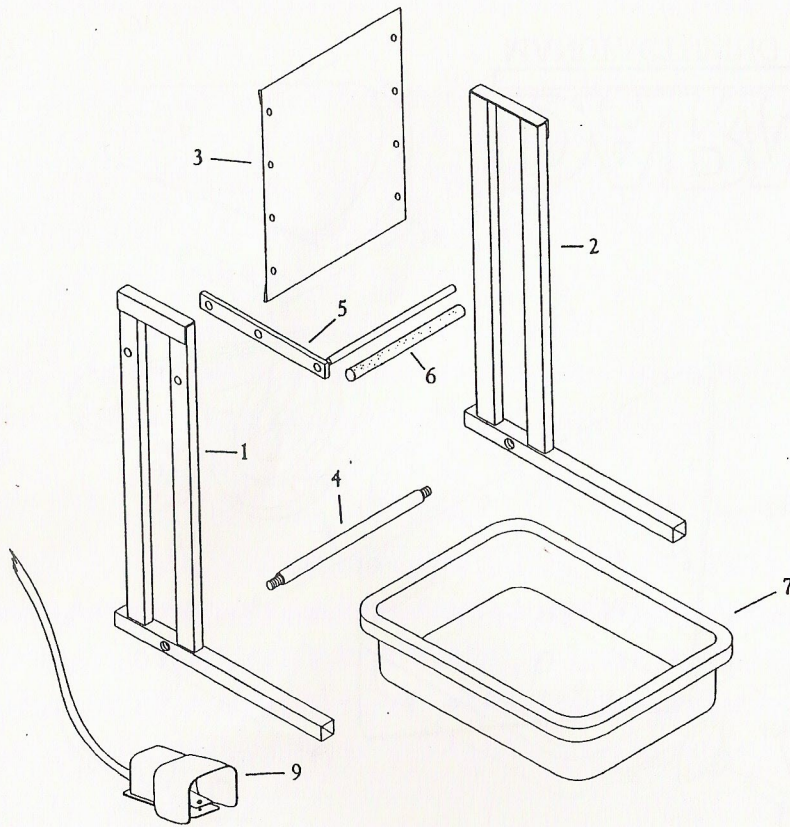




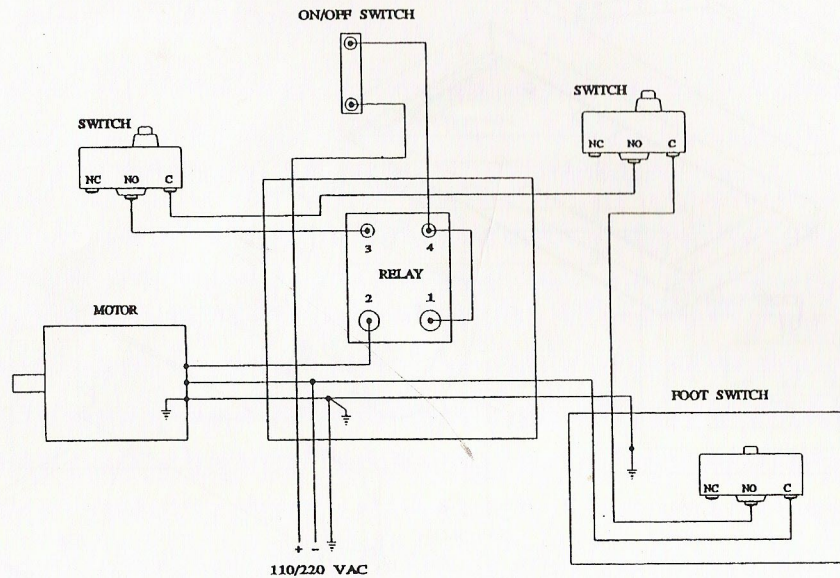
**DARMAN**  
 MANUFACTURING COMPANY, INC.

# The Darman Auto Combo

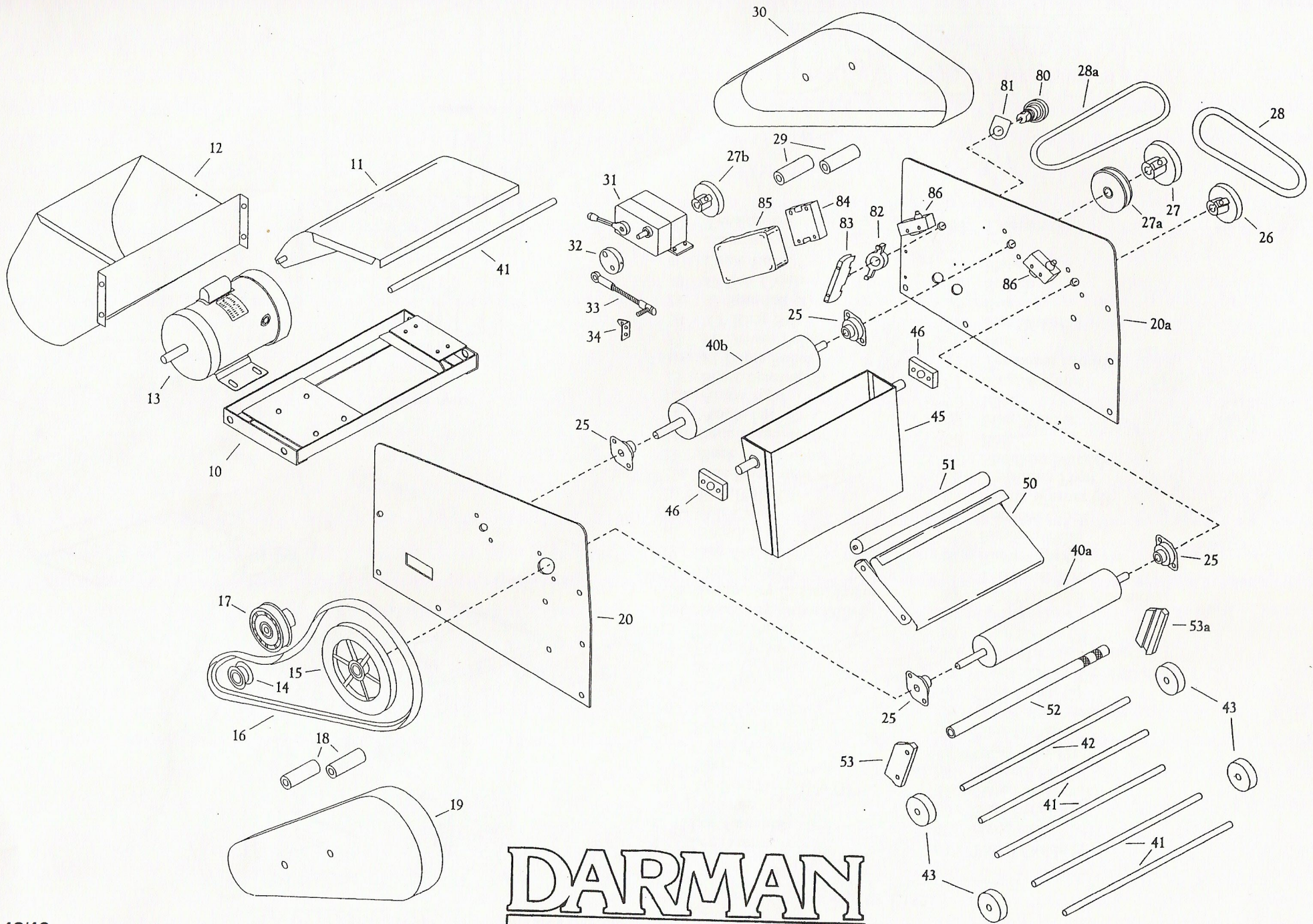
## Parts List



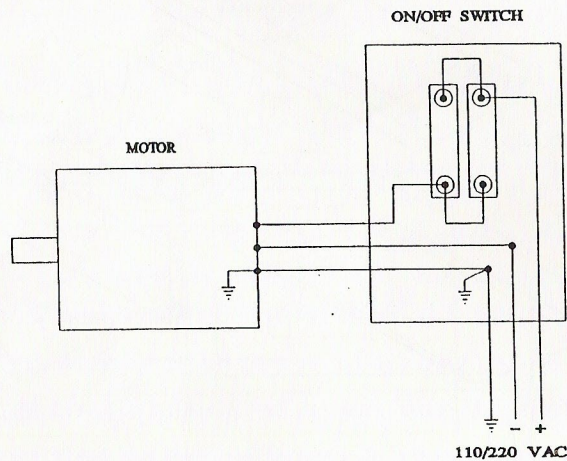
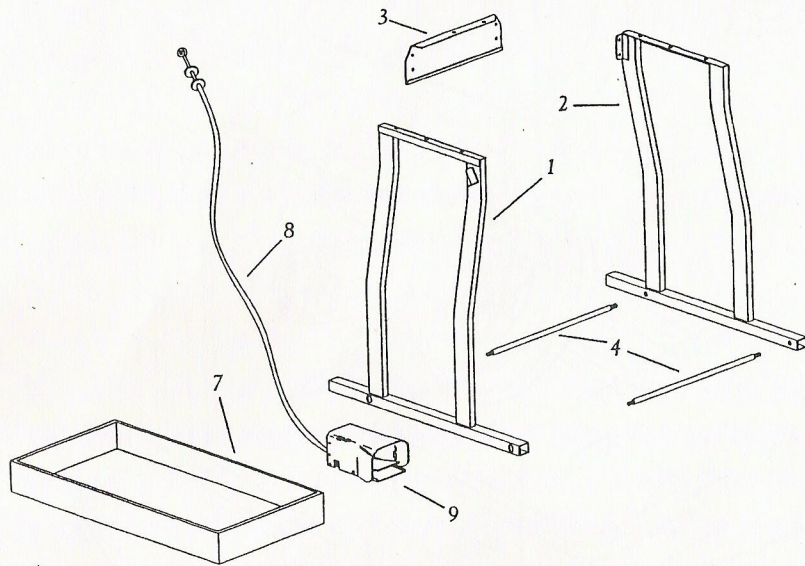
- |     |                           |     |                         |
|-----|---------------------------|-----|-------------------------|
| 1   | Leg Assembly <i>left</i>  | 28a | 'O' Ring Belt           |
| 2   | Leg Assembly <i>right</i> | 29  | Standoff (2)            |
| 3   | Stiffener                 | 30  | #2 Belt Cover           |
| 4   | Tie Rod Assembly          | 31  | Gear Box                |
| 5   | Arm                       | 32  | Eccentric               |
| 6   | Rubber Sleeve             | 33  | Chute Drive Link        |
| 7   | Towel Tray                | 34  | Drive Bracket           |
| 9   | Foot Switch               | 40a | Drive Roller A          |
| 10  | Motor Frame               | 40b | Drive Roller B          |
| 11  | Cover                     | 41  | Tension Bar (5)         |
| 12  | Towel Box                 | 42  | Tension Bar (1)         |
| 13  | Motor                     | 43  | Towel Guide (4)         |
| 14  | Drive Pulley              | 45  | Chute                   |
| 15  | Driven Pulley             | 46  | Pivot Block (2)         |
| 16  | Drive Belt                | 50  | Pivot Gate              |
| 17  | Idler Assembly            | 51  | Pivot Gate Roller       |
| 18  | Standoff (2)              | 52  | Tapered Shaft           |
| 19  | Drive Belt Cover          | 53  | Wear Plate <i>left</i>  |
| 20  | Side Plate <i>left</i>    | 53a | Wear Plate <i>right</i> |
| 20a | Side Plate <i>right</i>   | 80  | On/Off Switch           |
| 25  | Shaft Bearing (4)         | 81  | Plate                   |
| 26  | #2 Drive Pulley           | 82  | Clip                    |
| 27  | #2 Driven Pulley          | 83  | Contact                 |
| 27a | 'O' Ring Drive Pulley     | 84  | Relay                   |
| 27b | 'O' Ring Driven Pulley    | 85  | Cover                   |
| 28  | Vee Belt                  | 86  | Switch (2)              |



**DARMAN**  
MANUFACTURING COMPANY, INC.



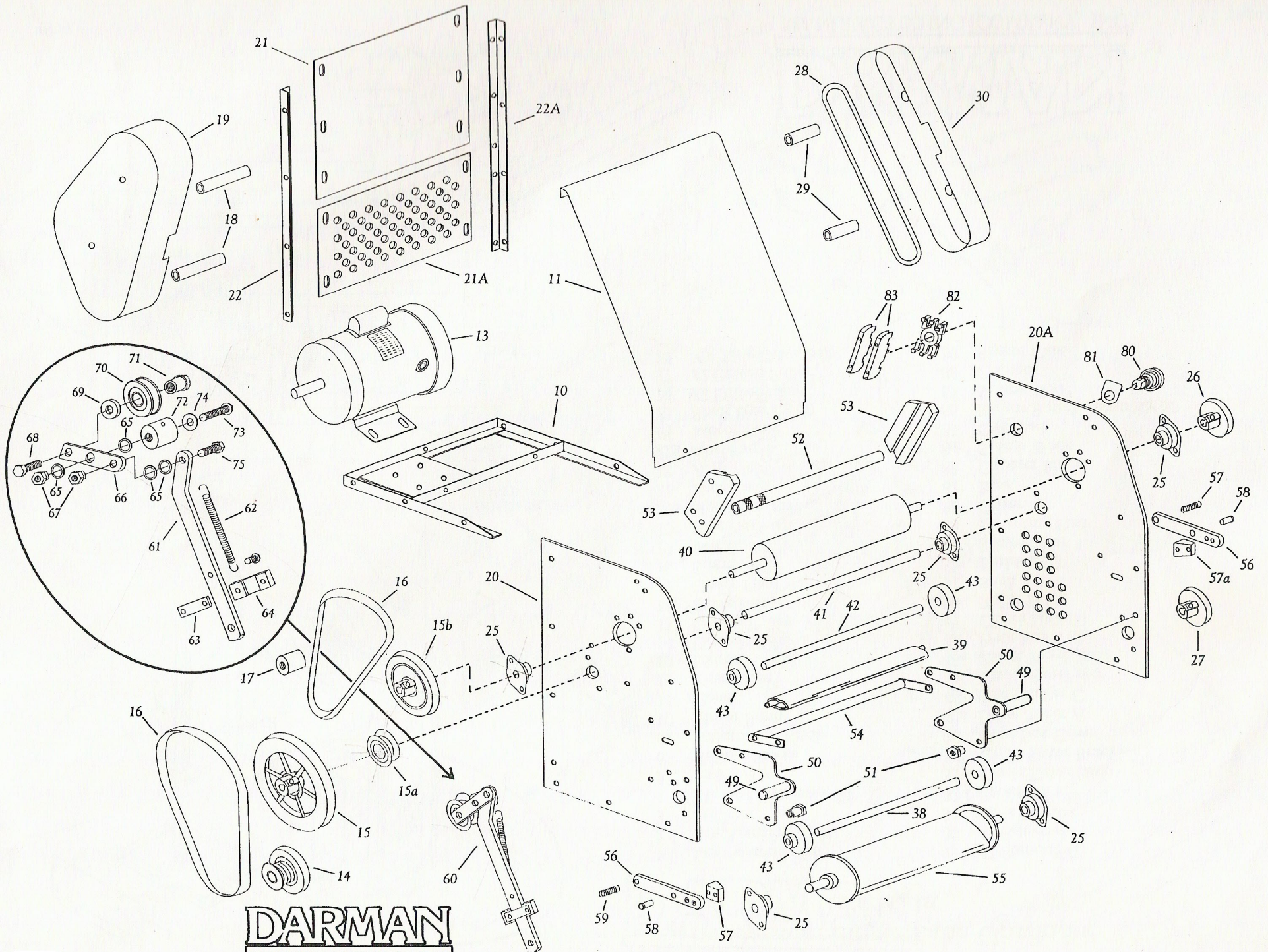
**DARMAN**  
 MANUFACTURING COMPANY, INC.



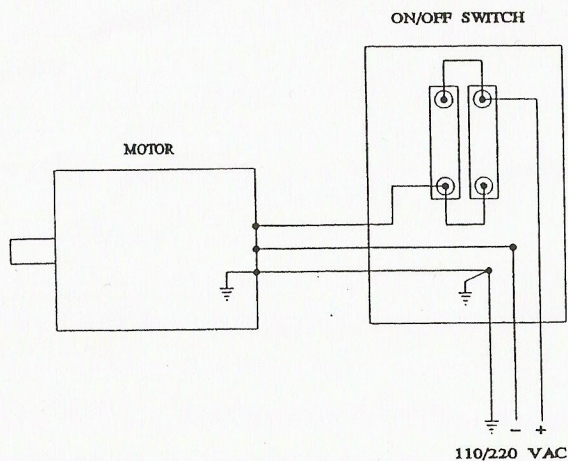
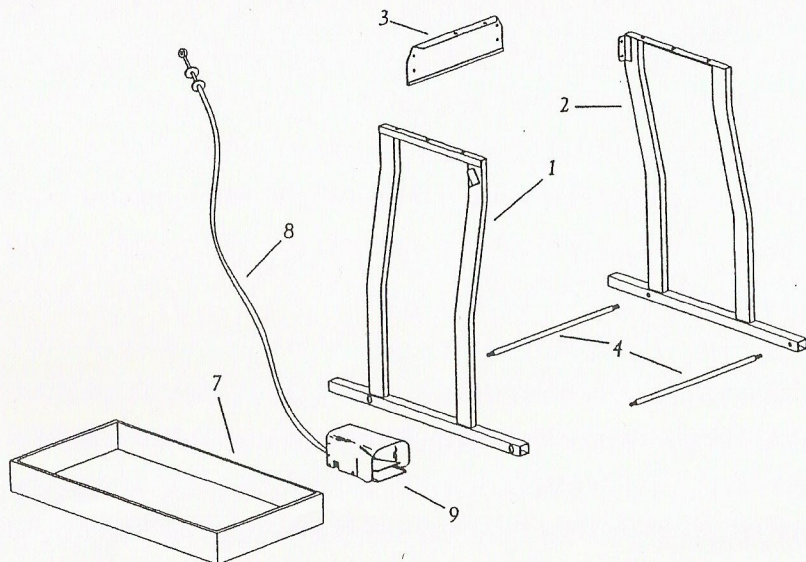
## The Darman Winder 1989 - 1999

### Parts List

1 Leg Assembly left	43 Towel Guide (4)
2 Leg Assembly right	49 Handle (2)
3 Stiffener	50 Gate Panel (2)
4 Tie Rod Assembly (2)	51 Gate Fastener (2)
7 Tray	52 Tapered Shaft
8 Cable Assembly	53 Wear Plate (2)
9 Foot Pedal	54 Gate Stiffener
10 Motor Frame	55 Beater Bar Assembly
11 Cover	56 Gate Latch (2)
13 Motor	57 Plastic Latch Tip left
14 Drive Pulley	57a Plastic Latch Tip right
15 Driven Pulley	58 Steel Sleeve (2)
15a Secondary Drive Pulley	59 Spring (2)
15b Secondary Driven Pulley	60 Belt Tensioner Assembly
16 Drive Belt (2)	61 Tensioner Arm
17 Belt Guide	62 Return Spring
18 Stand Off (2)	63 Retainer Plate
19 Belt Cover	64 Retainer Block
20 Side Plate left	65 Plastic Washer (4)
20a Side Plate right	66 Tensioner Pivot
21 Back Panel upper	67 Shoulder Nut (2)
21a Back Panel lower	68 Bolt
22 Angle left	69 Idler Washer
22a Angle right	70 Idler
25 Shaft Bearing (6)	71 Shoulder Nut
26 #2 Drive Pulley	72 Tensioner Mount
27 #2 Driven Pulley	73 Bolt
28 O'Ring Belt	74 Flat Washer
29 #2 Stand Off (2)	75 Bolt
30 #2 Belt Cover	80 Switch
40 Drive Roller	81 Plate
41 Auxiliary Shaft	82 Clip
42 Tension Bar	83 Contact (2)



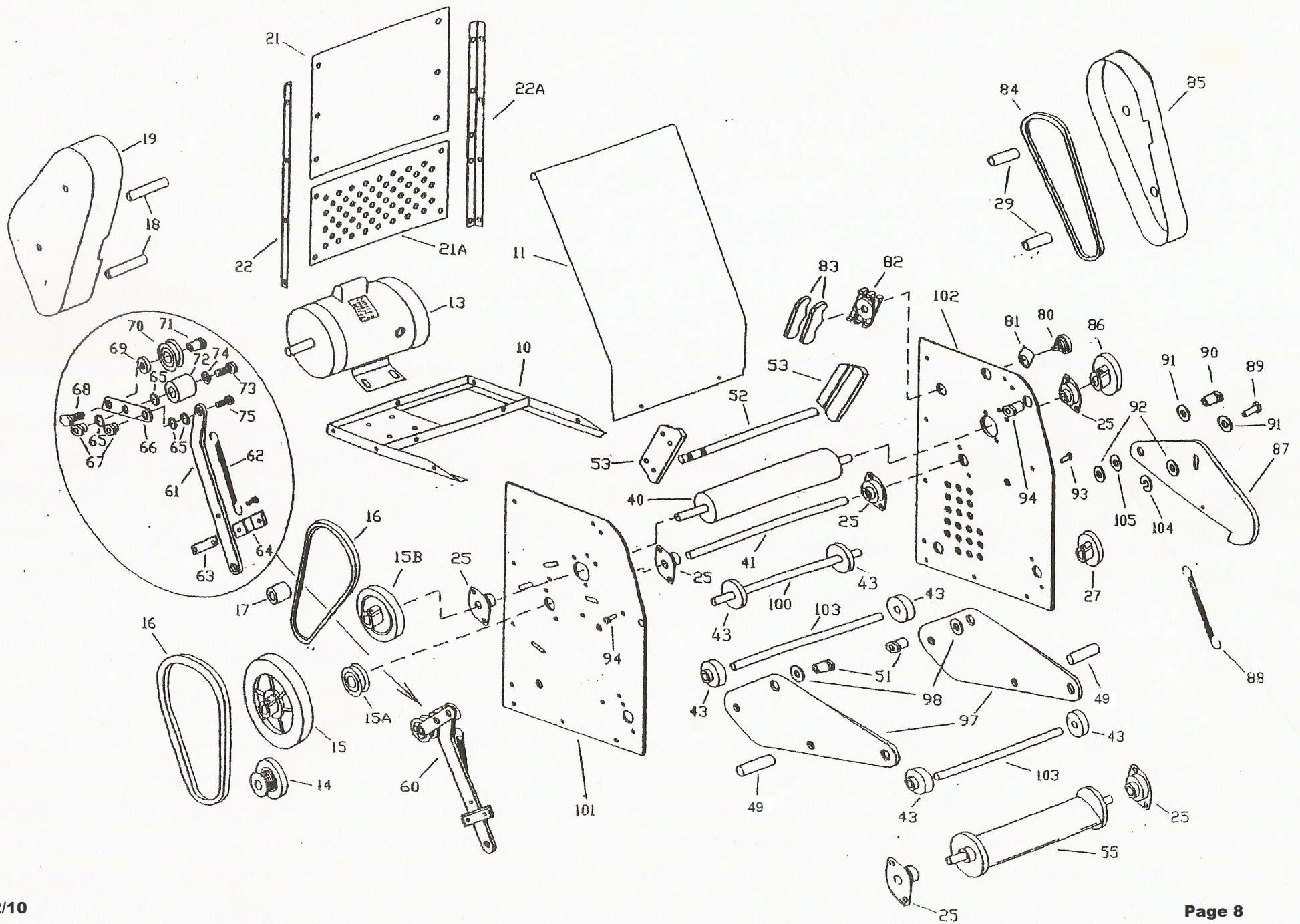
**DARMAN**  
MANUFACTURING COMPANY, INC.



## The Darman Winder 2000 - 2007

### Parts List

1 Leg Assembly left	63 Retainer Plate
2 Leg Assembly right	64 Retainer Block
3 Stiffener	65 Plastic Washer (4)
4 Tie Rod Assembly (2)	66 Tensioner Pivot
7 Tray	67 Shoulder Nut (2)
8 Cable Assembly	68 Bolt
9 Foot Pedal	69 Idler Washer
10 Motor Frame	70 Idler
11 Cover	71 Shoulder Nut (2)
13 Motor	72 Tensioner Mount
14 Drive Pulley	73 Bolt
15 Driven Pulley	74 Flat Washer
15a Secondary Drive Pulley	75 Bolt
15b Secondary Driven Pulley	80 Switch
16 Drive Belt (2)	81 Plate
17 Belt Guide	82 Clip
18 Stand Off (2)	83 Contact (2)
19 Belt Cover	84 "O" Ring Belt
21 Back Panel upper	85 #2 Belt Cover
21a Back Panel lower	86 #2 Drive Pulley
22 Angle left	87 Gate Latch (catch plate)
22a Angle right	88 Spring
25 Shaft Bearing (6)	89 Bolts (2)
27 Driven Pulley	90 Gate Pivot Shoulder Nut
29 Stand Off (2)	91 Washers (2)
40 Drive Roller	92 Washers (2)
41 Auxiliary Shaft	93 Bolt
43 Towel Guide (6)	94 Shoulder Nut (2)
49 Handle (2)	97 Gate Panel (2)
51 Gate Fastener (2)	98 Washers (2)
52 Tapered Shaft	100 Tension Bar 16"
53 Wear Plates (2)	101 Side Plate Left
55 Beater Bar Assembly	102 Side Plate Right
60 Belt Tensioner Assembly	103 Tension Bar 15 1/8" (2)
61 Tensioner Arm	104 Snap Ring
62 Return Spring	105 Washer

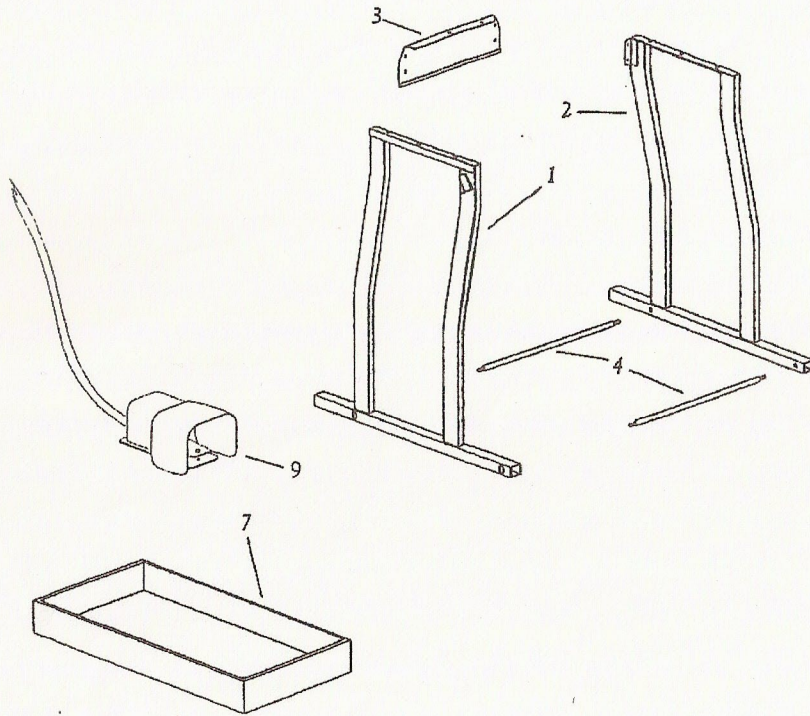


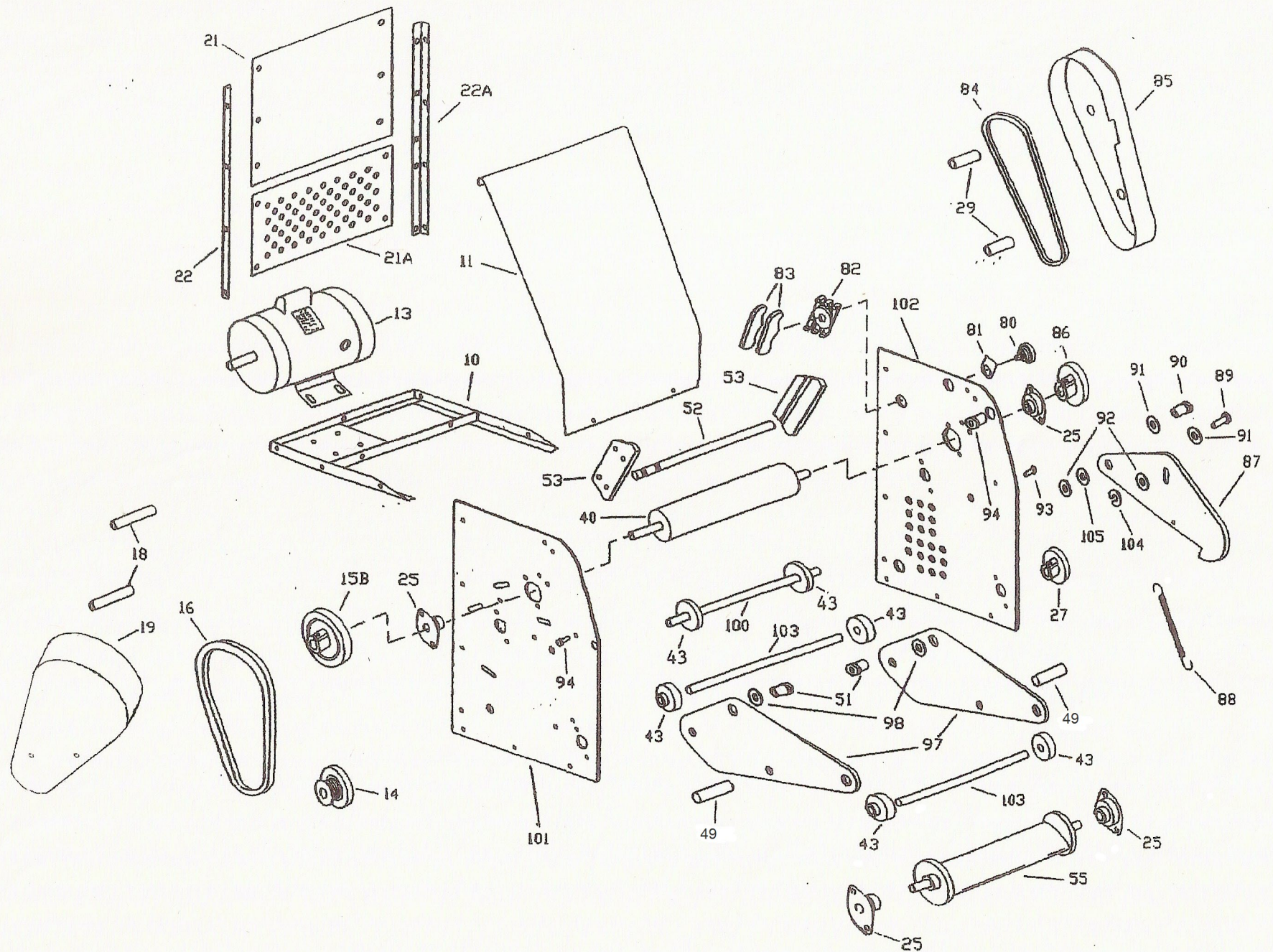


# The Darman Winder 2008 - present

## Parts List

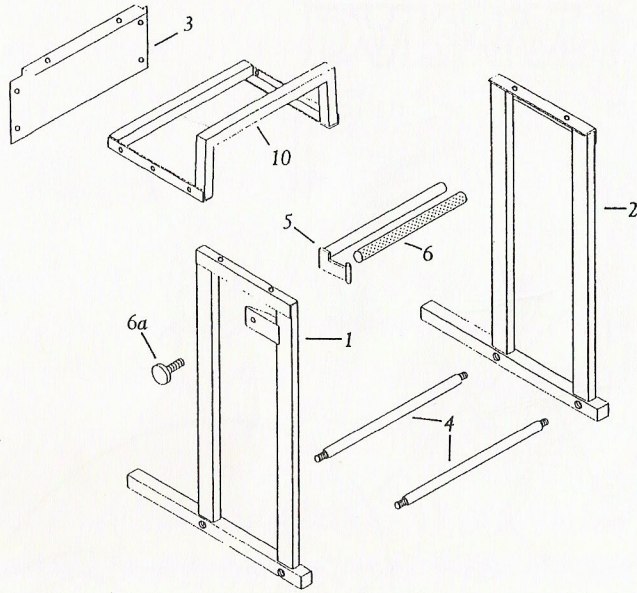
1	Leg Assembly left	53	Wear Plates (2)
2	Leg Assembly right	55	Beater Bar Assembly
3	Stiffener	80	Switch
4	Tie Rod Assembly (2)	81	Plate
7	Tray	82	Clip
9	Foot Pedal and Cable	83	Contact (2)
10	Motor Frame	84	"O" Ring Belt
11	Cover	85	#2 Belt Cover
13	Motor	86	#2 Drive Pulley
14	Drive Pulley	87	Gate Latch (catch plate)
15b	Secondary Driven Pulley	88	Spring
16	Drive Belt (2)	89	Bolts (2)
18	Stand Off (2)	90	Gate Pivot Shoulder Nut
19	Belt Cover	91	Washers (2)
21	Back Panel upper	92	Washers (2)
21a	Back Panel lower	93	Bolt
22	Angle left	94	Shoulder Nut (2)
22a	Angle right	97	Gate Panel (2)
25	Shaft Bearing (6)	98	Washers (2)
27	Driven Pulley	100	Tension Bar 16"
29	Stand Off (2)	101	Side Plate Left
40	Drive Roller	102	Side Plate Right
43	Towel Guide (4)	103	Tension Bar 15 1/8" (2)
49	Handle (2)	104	Snap Ring
51	Gate Fastener (2)	105	Washer
52	Tapered Shaft		



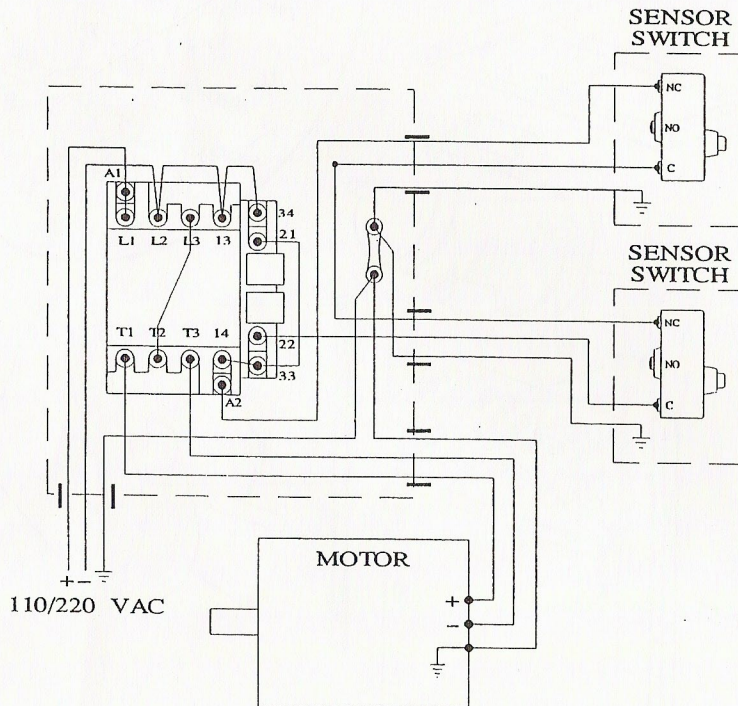


# The Darman Single Lane Unwinder

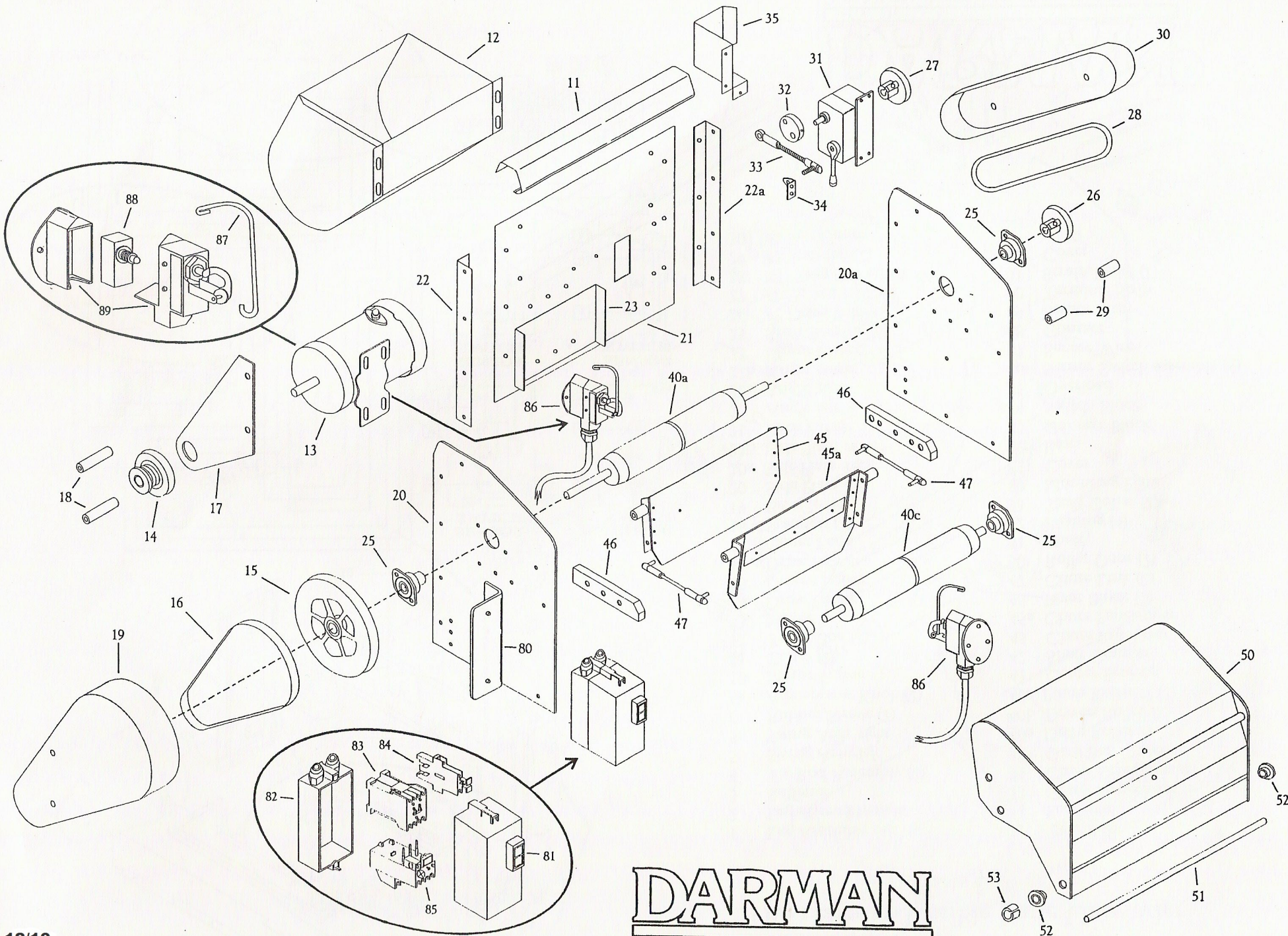
## Parts List



- |     |                      |     |                            |
|-----|----------------------|-----|----------------------------|
| 1   | Leg Assembly left    | 29  | #2 Standoff (2)            |
| 2   | Leg Assembly right   | 30  | #2 Belt cover              |
| 3   | Stiffener            | 31  | Gear Box                   |
| 4   | Tie Rod Assembly (2) | 32  | Eccentric                  |
| 5   | Swing Arm            | 33  | Chute Drive Link           |
| 6   | Rubber Sleeve        | 34  | Chute Drive Bracket        |
| 6a  | Adjustment Knob      | 35  | Gear Box Cover             |
| 10  | Motor Frame          | 40a | Drive Roller A             |
| 11  | Cover                | 40c | Pinch Roller C             |
| 12  | Towel Box            | 45  | Chute Panel rear           |
| 13  | Motor                | 45a | Chute Panel front          |
| 14  | Drive Pulley         | 46  | Pivot Block (2)            |
| 15  | Driven Pulley        | 47  | Chute Link (2)             |
| 16  | Drive Belt           | 50  | Roller Door                |
| 17  | Cover Plate          | 51  | Shaft                      |
| 18  | Standoff (2)         | 52  | Bushing (2)                |
| 19  | Belt Cover           | 53  | Shaft Collar               |
| 20  | Side Plate left      | 80  | Mounting Plate             |
| 20a | Side Plate right     | 81  | Cover                      |
| 21  | Back Plate           | 82  | Base                       |
| 22  | Angle left           | 83  | Contact Block              |
| 22a | Angle right          | 84  | Switch Block               |
| 23  | Motor Plate          | 85  | Overload                   |
| 25  | Shaft Bearing (4)    | 86  | Sensor Switch Assembly (2) |
| 26  | #2 Drive Pulley      | 87  | Sensor Wire                |
| 27  | #2 Driven Pulley     | 88  | Contact                    |
| 28  | 'O' Ring Drive Belt  | 89  | Sensor Case                |



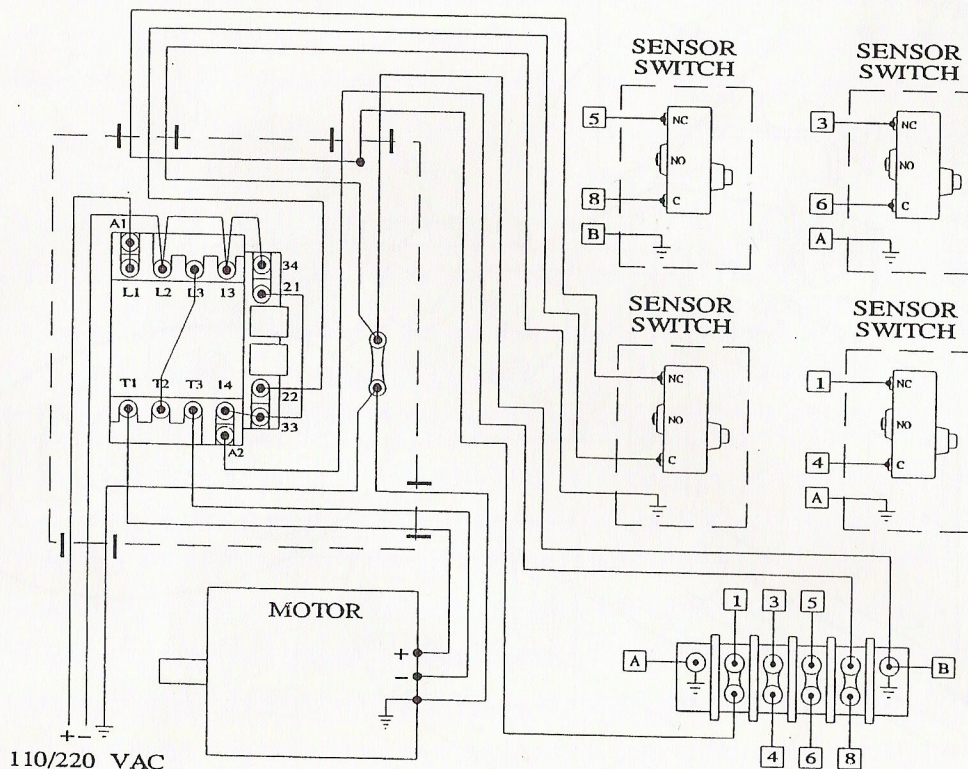
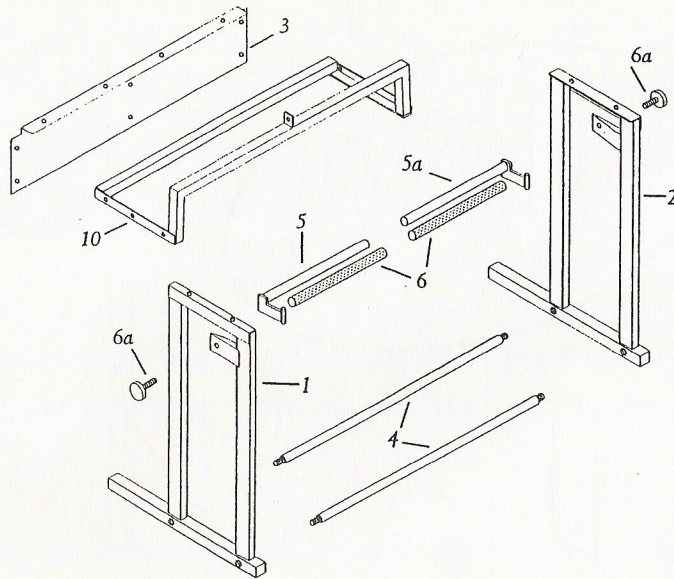
**DARMAN**  
MANUFACTURING COMPANY, INC.



**DARMAN**  
 MANUFACTURING COMPANY, INC.

# The Darman Double Lane Unwinder

## Parts List



- |     |                           |     |                            |
|-----|---------------------------|-----|----------------------------|
| 1   | Leg Assembly <i>left</i>  | 31  | Gear Box                   |
| 2   | Leg Assembly <i>right</i> | 32  | Eccentric                  |
| 3   | Stiffener                 | 33  | Chute Drive Link           |
| 4   | Tie Rod Assembly (2)      | 34  | Chute Drive Bracket        |
| 5   | Swing Arm <i>left</i>     | 35  | Gear Box Cover             |
| 5a  | Swing Arm <i>right</i>    | 40a | Drive Roller A             |
| 6   | Rubber Sleeve (2)         | 40b | Driven Roller B            |
| 6a  | Adjustment Knob (2)       | 40c | Pinch Roller C (2)         |
| 10  | Motor Frame               | 41  | Center Bearing             |
| 11  | Cover (2)                 | 42  | Shaft Coupler              |
| 12  | Towel Box (2)             | 45  | Chute Panel <i>rear</i>    |
| 13  | Motor                     | 45a | Chute Panel <i>front</i>   |
| 14  | Drive Pulley              | 46  | Pivot Block (2)            |
| 15  | Driven Pulley             | 47  | Chute Link (2)             |
| 16  | Drive Belt                | 50  | Roller Door (2)            |
| 17  | Cover Plate               | 51  | Shaft                      |
| 18  | Standoff (2)              | 52  | Bushing (4)                |
| 19  | Belt Cover                | 53  | Shaft Collar (2)           |
| 20  | Side Plate <i>left</i>    | 80  | Mounting Plate             |
| 20a | Side Plate <i>right</i>   | 81  | Cover                      |
| 20b | Side Plate <i>center</i>  | 82  | Base                       |
| 21  | Back Panel                | 83  | Contact Block              |
| 22  | Angle <i>left</i>         | 84  | Switch Block               |
| 22a | Angle <i>right</i>        | 85  | Overload                   |
| 22b | Angle <i>center</i>       | 86  | Sensor Switch assembly (4) |
| 23  | Motor Plate               | 87  | Sensor Wire                |
| 25  | Shaft Bearing (6)         | 88  | Contact                    |
| 26  | #2 Drive Pulley           | 89  | Sensor Case                |
| 27  | #2 Driven Pulley          | 90  | Terminal Strip             |
| 28  | 'O' Ring Drive Belt       | 91  | Strain Relief (2)          |
| 29  | #2 Standoff (2)           | 92  | Cover                      |
| 30  | #2 Belt Cover             |     |                            |

**DARMAN**  
MANUFACTURING COMPANY, INC.

